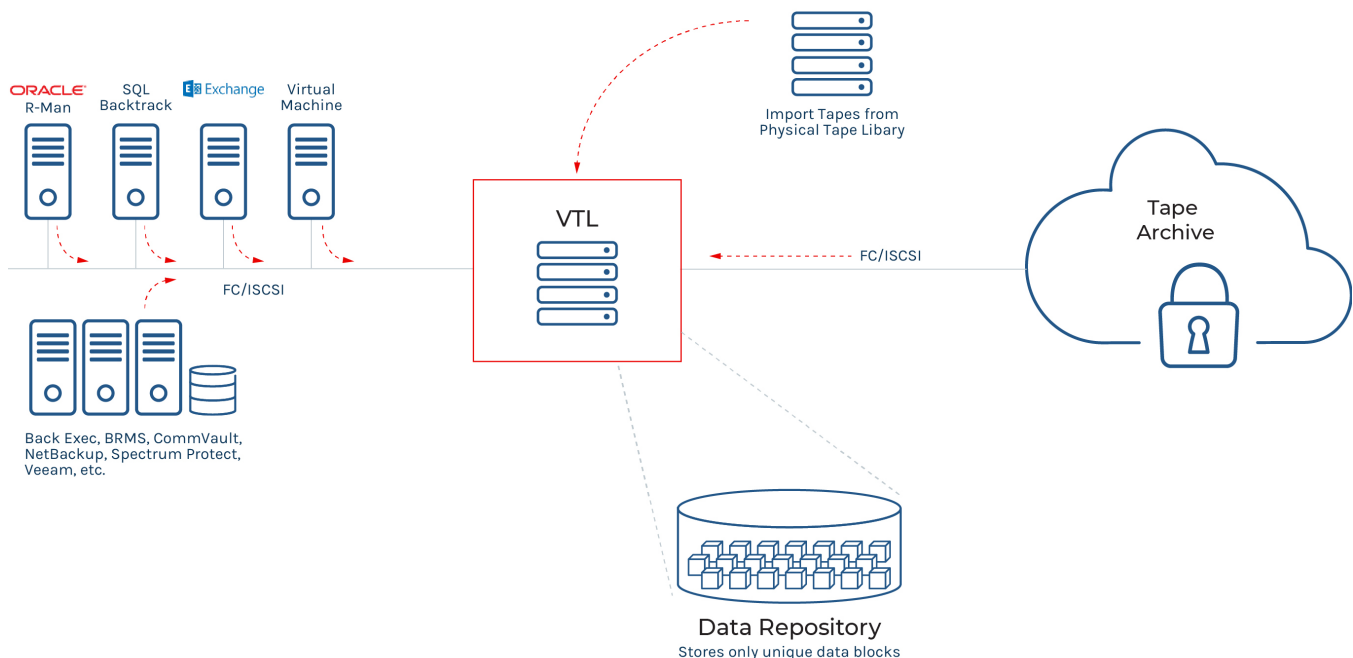


Import Tapes from Physical Tape Library To FalconStor VTL

PURPOSE

FalconStor's VTL's import function allows an administrator to copy the data from a physical tape to a virtual tape. Doing so, then enables global data deduplication, enterprise wide replication and tape export to cloud storage without requiring changes to the existing environment.

FALCONSTOR VTL: DATABASE AND BACKUP SERVERS



ENVIRONMENT:

The FalconStor VTL server is configured for production, any of the 50+ supported physical tape library with tape drives and tapes is available. For a complete list of all supported physical libraries, tape drives visit our certification matrix at: <https://www.falconstor.com/certificationmatrix/tape-devices>



PRE-OPERATION CHECKLIST:

A maintenance window is needed if the physical tape library has not been added to the VTL server from the VTL console.

DETAILED INSTRUCTIONS:

1. Configure the fibre channel ("FC") zones between the VTL server and physical tape library, as well as the VTL server and physical tape drives.

Note: It is recommended to use 2-member soft FC zones (one initiator and one target).

Example:

VTL FC port 100's initiator WWPN: 21:00:00:24:ff:42:1d:79

Physical tape library's WWPN: 21:00:00:0d:77:3a:f2:a6

Physical tape drive 1's WWPN: 21:00:00:0d:77:3a:f2:a7

Switch: Brocade FC switch with active configuration named Production

```
alcreate VTL_100i, 21:00:00:24:ff:42:1d:79
```

```
alcreate PTL, 21:00:00:0d:77:3a:f2:a6
```

```
alcreate PTD_1, 21:00:00:0d:77:3a:f2:a7
```

```
zonecreate VTL_100i_PTL, VTL_100i
```

```
zoneadd VTL_100i_PTL, PTL
```

```
zonecreate VTL_100i_PTD_1, VTL_100i
```

```
zoneadd VTL_100i_PTD_1, PTD_1
```

```
cfgadd Production, VTL_100i_PTL
```


```
cfgadd Production, VTL_100i_PTD_1
```

```
cfgsave
```

```
cfgenable Production
```

2. Provision the physical tape library and physical tape drives to the VTL server.

3. From the VTL console, connect to the VTL server.

 FalconStor Virtual Tape Library Console

File Edit View Tools Help



Servers

tsvtl0506


tsvtl10

VTL61234

VTL61238

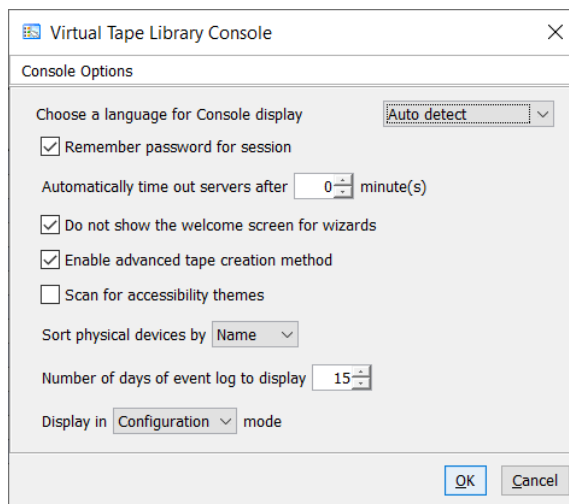
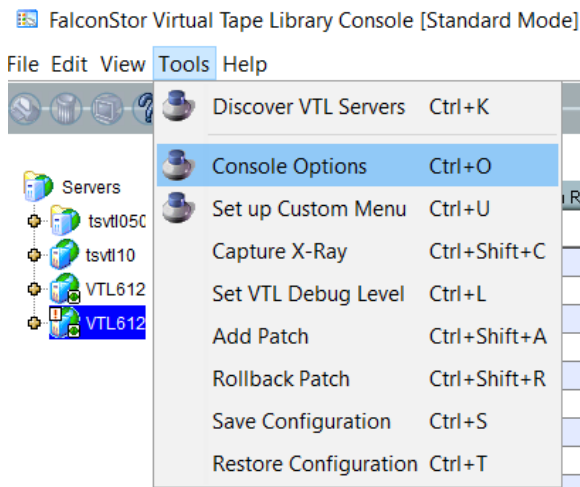
Connect

Connect As

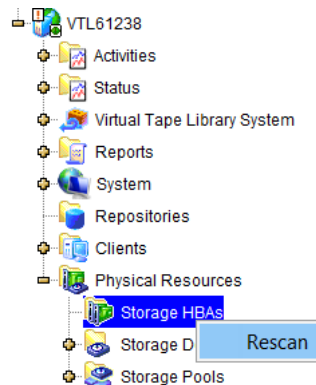
 Delete



- Go to Tools menu -> Console Options -> Change the Display Mode from Standard to Configuration.

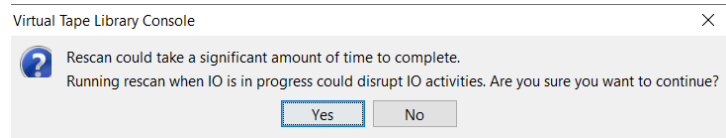


- Go to the Physical Resources -> Storage HBAs -> Right click and select the Rescan option to pick up the new physical tape library and tape drives.

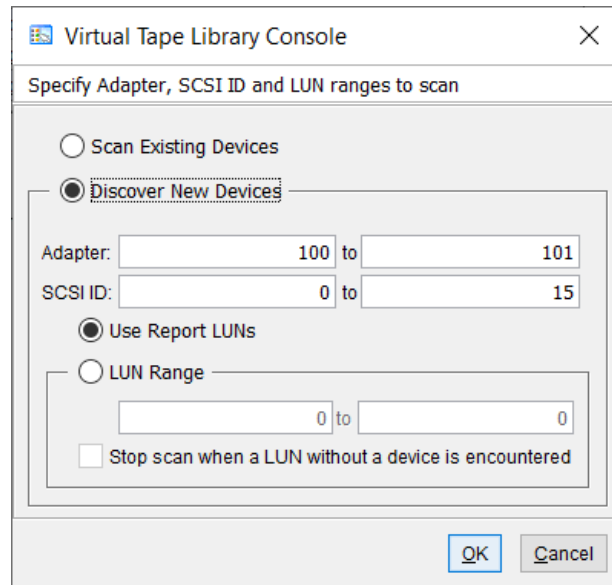




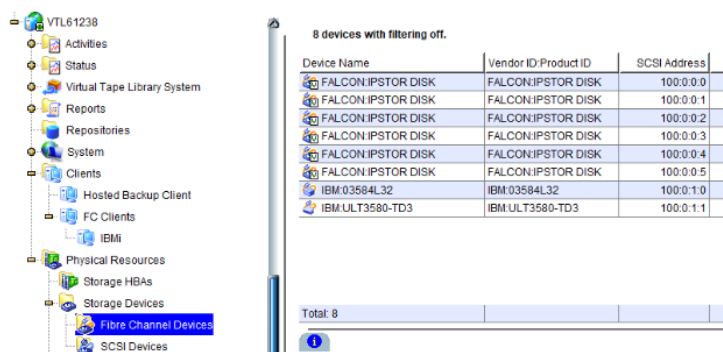
6. Make sure there are no I/O activities (no backup jobs, no export jobs). Then click the Yes button to continue.



7. Select the Discover New Devices option and then click on the Ok button.

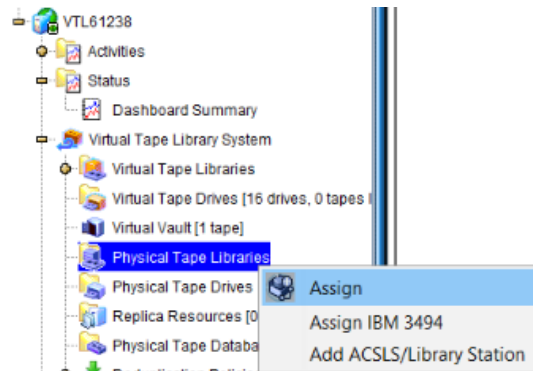


8. Once the physical tape library and physical tape drives are pick up, it will be display under the Physical Resources -> Storage Devices -> Fibre Channel Devices Tree

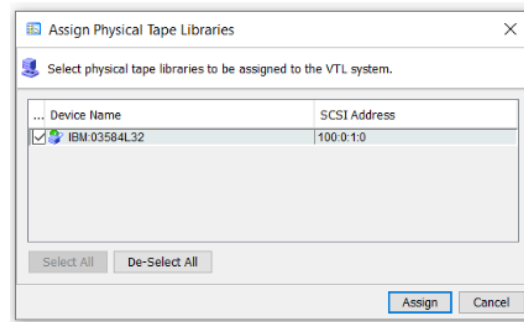




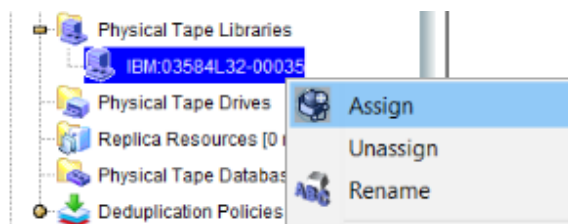
9. Go to Virtual Tape Library System -> Physical Tape Libraries -> Right Click -> Assign



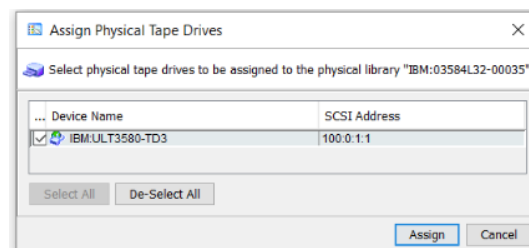
10. Select the Physical Tape Library and click the Assign button for adding it to the VTL server.



11. Right click the newly added physical tape library under Physical Tape Libraries -> Assign

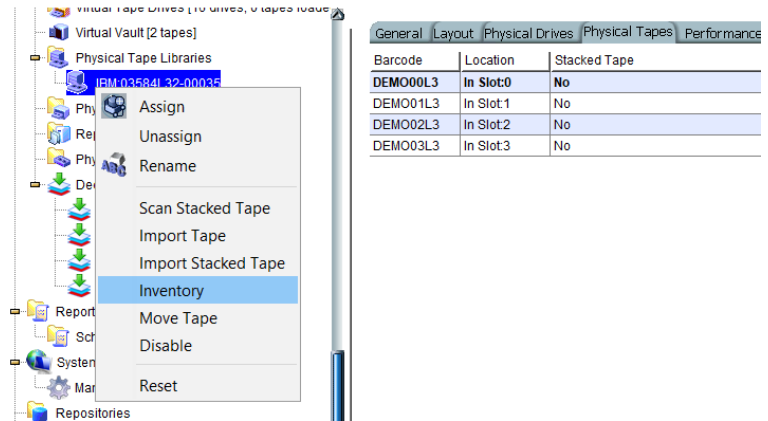


12. Select all the physical tape drives that belonging to the physical tape library and then click the Assign button.

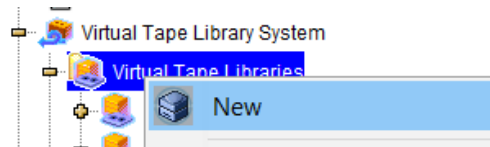




13. If there are any manual changes on the physical tape library like adding physical tapes, then update the changes on the VTL server by right-clicking the newly added physical tape library under the Physical Tape Libraries tree -> Inventory

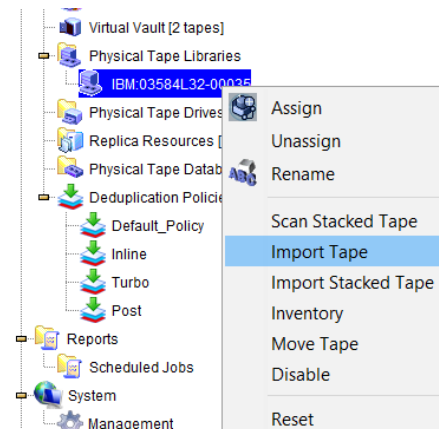


14. Create a new virtual tape library with same tape drive type technologies (IBM LTO, HP LTO, Quantum DLT etc)



Note: VTL can import data from physical tape to virtual tape by using newer generation of the same tape drive type technologies. For example, the physical tape drive is IBM LTO3 and the virtual tape drive is IBM LTO7. However, please make sure the backup software's restore job is compatible with newer tape drive type. Otherwise, use the same or one generation newer drive type.

15. To import physical tapes to the VTL server, right click on the newly physical tape library > Import Tape





16. Pick the destination virtual tape library for placing the import tape. Then click Next button.

Import Physical Tape To Virtual Library Wizard - [VTL61238]

Select the virtual library to which you want to import a tape.

Select the virtual library to which you want to import.

Virtual Tape Library
IBM-TS3500L22-00023
IBM-TS3500L32-00026
IBM-TS3500L32-00030-Demo

Click <Next> to continue.

Back Next Cancel

17. Select the Copy Mode for the import job.

Import Physical Tape To Virtual Library Wizard - [VTL61238]

Select the import mode for importing a tape.

Select the import mode for importing a tape.

☒ **Copy Mode**
Copies the contents of a physical tape onto a virtual tape and retains the physical tape after the data is transferred.

☐ **Direct Access Mode**
Links a physical tape to its virtual counterpart. This gives the backup application immediate access to the tape data without waiting for a complete copy. This is useful when you need to restore a small amount of data from a physical tape.

☐ **Recycle Mode**
Recycles a physical tape after its retention period has been reached.

☐ **Decrypt data with the selected key when importing a physical tape**
Select a key:

Click <Next> to continue.

Back Next Cancel

18. Select the physical tapes that will be imported and click the Next button.

Import Physical Tape To Virtual Library Wizard - [VTL61238]

Select the physical tape to import to a virtual library

Select the physical tape you want to import to a virtual library.
Virtual Tape Library: IBM-TS3500L32-00026. Import Mode: Copy Mode. Total Free Slots: 247.
Maximum physical tapes that can be imported: 6.

* Physical Tape Barcode	Location	Virtual Tape Bar...	Slot
<input type="checkbox"/> DEMO00L3	slot: 0	DEMO00L3	6
<input type="checkbox"/> DEMO01L3	slot: 1	DEMO01L3	7
<input type="checkbox"/> DEMO02L3	slot: 2	DEMO02L3	8
<input type="checkbox"/> DEMO03L3	slot: 3	DEMO03L3	9
<input type="checkbox"/> DEMO04L3	slot: 4	DEMO04L3	10
<input checked="" type="checkbox"/> DEMO05L3	slot: 5	DEMO05L3	11

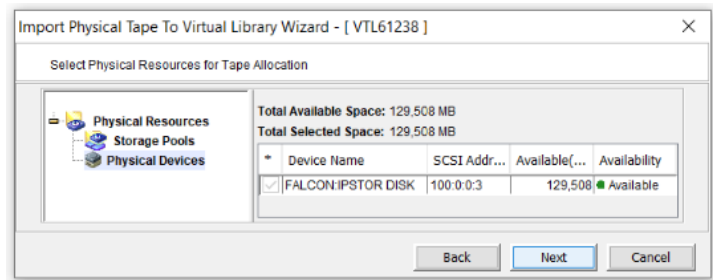
Select All De-Select All

Click <Next> to continue.

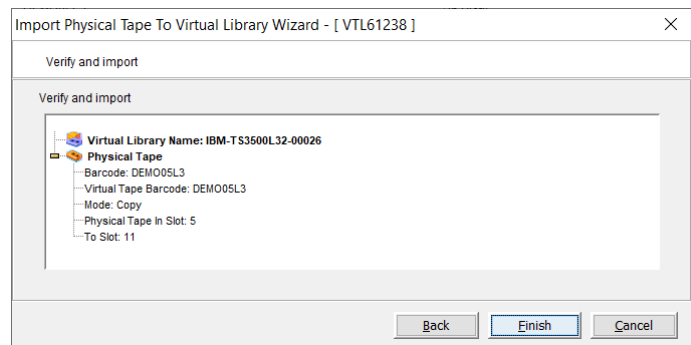
Back Next Cancel



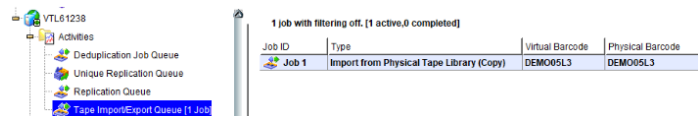
19. Select the storage LUN for saving the data and click Next button.



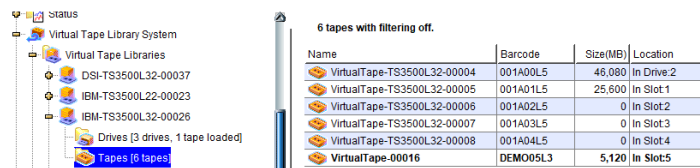
20. Review the import request and click Finish button to submit the import job(s).



21. An import job will be created for each selected physical tapes and display under the Activities -> Tape Import/Export Queue



22. Once the import job is completed, the corresponding virtual tape for each import job will be show up in the destination virtual tape library.



Information in this document is provided "As Is" without warranty of any kind, and is subject to change without notice by FalconStor, which assumes no responsibility for any errors or claims herein. Copyright 2018 FalconStor Software. All rights reserved. FalconStor Software, FalconStor and RecoverTrac are trademarks or registered trademarks of FalconStor Software, Inc. in the United States and other countries. All other company and product names contained herein are or may be trademarks of the respective holder.

FALCONSTOR®

Corporate Headquarters
 701 Brazos Street, Suite 400
 Austin, TX 78701
 Tel: +1.631.777.5188
salesinfo@falconstor.com

Europe Headquarters
 Rosa-Bavarese-Strasse 3
 80639 München, Germany
 Tel: +49 (0) 89.41615321.10
salesemea@falconstor.com

Asia Headquarters
 Room 1571, NCI Tower,
 12A Jianguomenwai Avenue
 Chaoyang District, Beijing, China 100022
 Tel: +86.400.120.6287
salesasia@falconstor.com